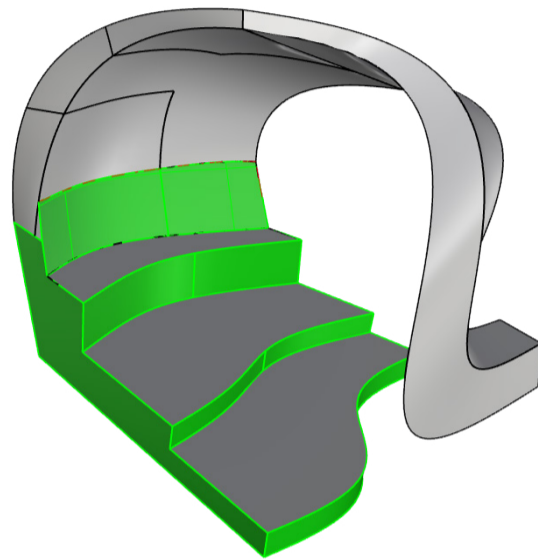


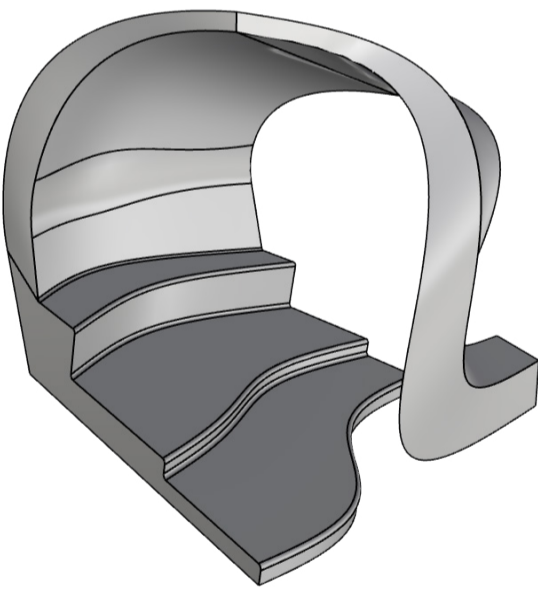
original model

this geometry is provided to the group. it is a preliminary geometry and therefore open for change. these changes were made in the following steps in order to increase the functional performance and



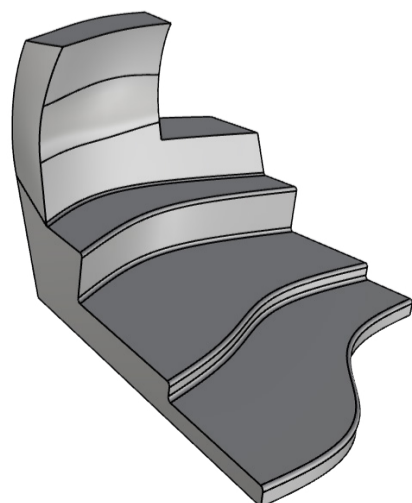
change surfaces for functional purposes

for the functional performance we looked at the human sitting, standing and walking position. because of these measurement we decided to implement several changes. these changes involved the straighten and setting them to the correct heights. also the backsupport of the sitting element was shifted upright to create a more comfortable sitting experience.



smoothen surfaces

after these functional changes the geometry was assessed and final geomteric changes were made to smoothen new and existing surfaces and reduce the size of the model.



trim to relevant element

as a last step the element our group will process was extracted from the entire geometry. the entire geometry contains three elements. for further assessments calculation will be made for the entire geometry. but modification based on these assessments will only be performed on this one element.